

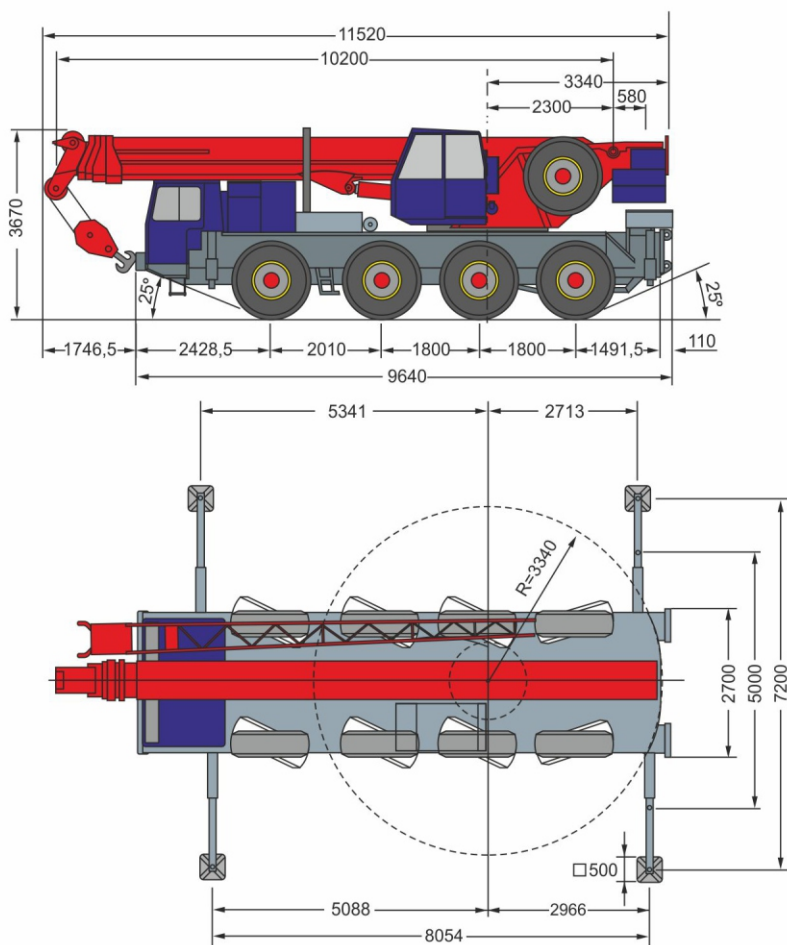


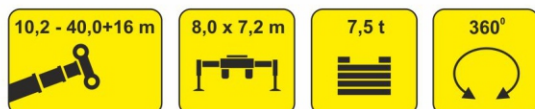
The **LIEBHERR LTM 1050 - 4** mobile crane has a loading capacity of **50 tons**, the main boom of **40 meters** and the lattice jib of **16 meters**.

The **LIEBHERR LTM 1050-4** mobile crane is all-terrain vehicle with **8x6** wheel arrangement. The truck crane is created specially for off-road use and severe conditions of the North. The crane is indispensable on soil platforms in cross-country conditions and slush. **4 steering-axes** of the crane allow it to get to hard-to-reach spots easily. The work area of the truck crane covers complete **360 degrees**; and that makes the truck crane indispensable in the constrained conditions.


Our **LIEBHERR LTM 1050-4** mobile crane worked at the Yamal Peninsula for the "GAZPROM Burenie" company for a long time. Like the other mobile cranes of the German **LIEBHERR** concern, this truck crane combines exclusive reliability and high speed of operations while moving loads. The leasing of the **LIEBHERR LTM 1050-4** mobile crane will considerably accelerate performance of loading, unloading and mounting works on your site.

The **LIEBHERR LTM 1050-4** mobile crane is ideally suited for mounting and dismounting of metalwork, equipment, floor slabs, crossbars, beams, modular unitized transformer substations, support of power transmission lines, boiler rooms, and also for lowering of boats and yachts, loading and unloading of heavyweight and bulky goods, carrying out any work in halls, buildings and platforms with limited space, and a set of other works. And it will be simply indispensable in cross-country conditions!





## Lifting capacities

 m	10,2	17,1	17,1	24,1	31,1	35,2	40,0	40,0+16
3,9	50,0							
3,5	43,5							
4,0	40,5							
4,5	36,5							
5,0	32,5	26,6		17,7				
6,0	27,3	23,7	19,0	17,3	10,2	8,2		
7,0	23,7	21,3	19,0	16,6	10,1	8,1	7,1	
8,0		19,1	19,0	15,6	10,0	8,0	7,0	
9,0		16,4	17,5	14,6	9,7	7,9	6,9	
10,0		14,0	15,5	13,6	9,4	7,8	6,8	
12,0		10,1	11,6	11,4	8,4	7,5	6,5	1,6
14,0		7,7	9,1	8,9	7,7	6,9	5,9	1,6
16,0				7,1	6,8	6,3	5,4	1,6
18,0				5,8	5,7	5,5	5,0	1,5
20,0				4,9	4,8	4,6	4,4	1,5
22,0					4,1	3,9	3,7	1,4
24,0					3,4	3,3	3,2	1,4
26,0					2,9	2,8	2,7	1,3
28,0					2,5	2,4	2,3	1,3
30,0						2,1	2,0	1,3
32,0						1,7	1,7	1,3
34,0							1,4	1,2
36,0								1,2
38,0								1,1
40,0								1,0