

ZOOMLION

Address: engineering crane of Zoomlion Quantang Industrial Park, Changsha Economic and Technological Development Zone, Hunan Province
Service hotline: 400-800-0157



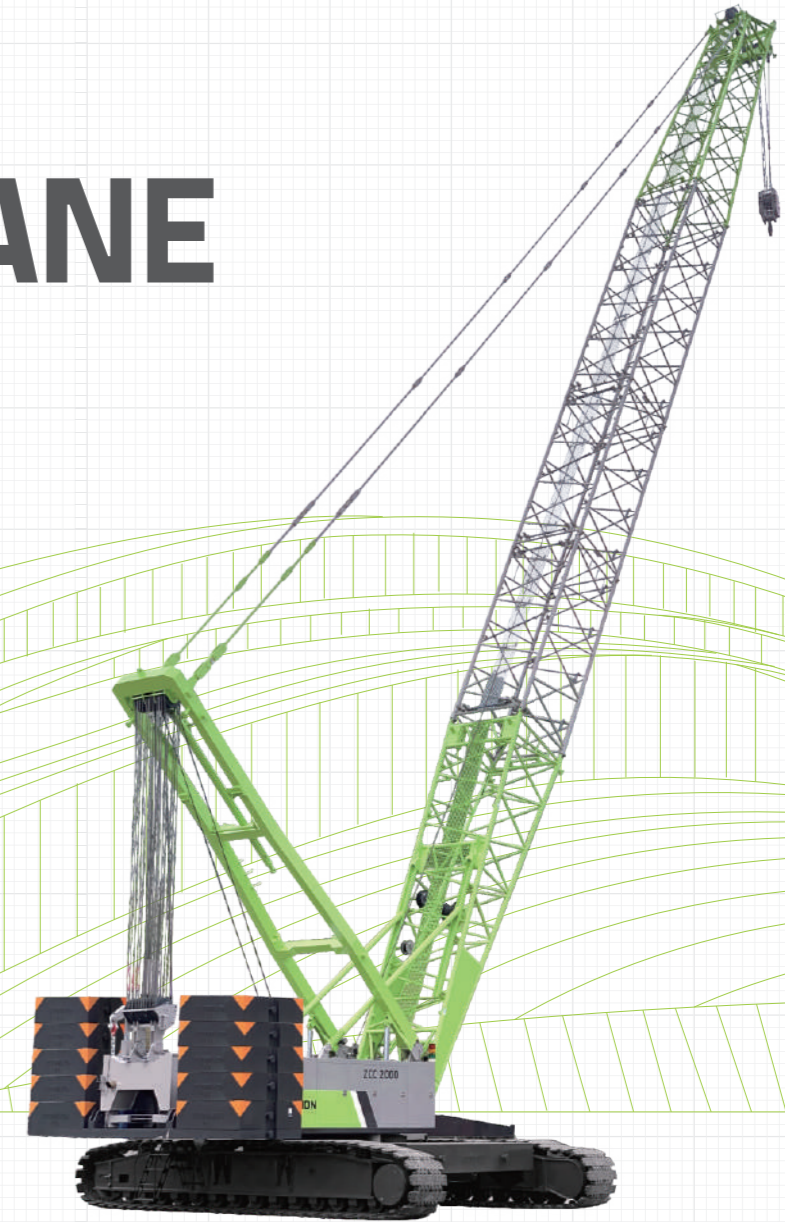
Copyright 2019 © Zoomlion. All rights reserved. No part of this content may be reproduced or copied for any purpose without the written permission of Zoomlion.
The information provided in this sample is for reference only. The specific parameters and configuration are subject to the actual delivery. The color of the product or equipment in the picture may be slightly different from the actual color due to printing reasons.

www.zoomlion.com

ZOOMLION CRAWLER CRANE

Zoomlion Crawler Crane

ZCC2000



ZOOMLION

VISION CREATES FUTURE

CONTENTS

ZCC2000	Technology Highlights	01 / 02
ZCC2000	Main Technical Parameters/Dimensions	03
ZCC2000	Working Condition	04
ZCC2000	Boom Combination	05 / 06
ZCC2000	Lifting Performance	06 / 14
ZCC2000	Transport Dimensions of Components	15 / 17
ZCC2000	Service System	19 / 20



ZOOMLION CRAWLER CRANE

ZCC2000 technology highlights

Better working performance

- General type 200 ton product with superior comprehensive performance;
- Lifting condition of reinforcement for subway construction: main boom 50m, rated lifting capacity 98.7t @ 10m;
- Lifting condition of plant construction structure: tower jib working condition: 56m + 21m, rated lifting capacity: 39.9t @ 20m;
- Various lifting methods are optional under the fixed jib working condition; main hook and auxiliary hook are switchable with one key;
- Four speeds are optional for main lifting to meet the diversified demand for speed;

More efficient disassembly and transportation

- Boom butt and crawler frame of the main boom can be loaded and unloaded by themselves; one-key synchronization of the string and the mast is possible;
- Integrated transportation of the mast, luffing pulley block and luffing mechanism, convenient for dismantling and transportation;
- The maximum single piece transport weight of the main engine may be no more than 30t and the transport width is 3m, allowing global barrier-free transport;
- Transportation of the tower jib with strut and transportation of packed standard sections maximize the use of transport space;

More satisfactory riding, driving, maintenance and protection

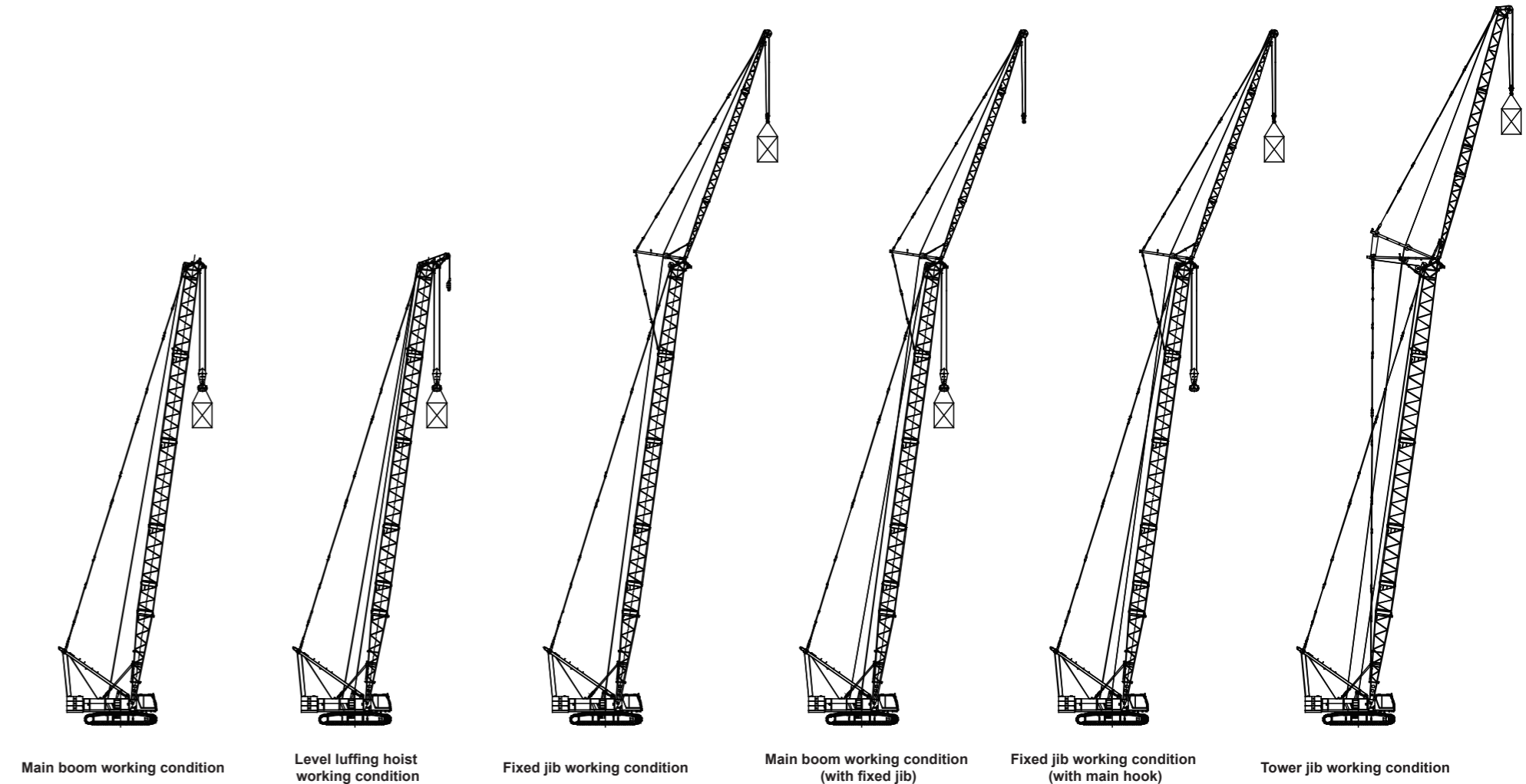
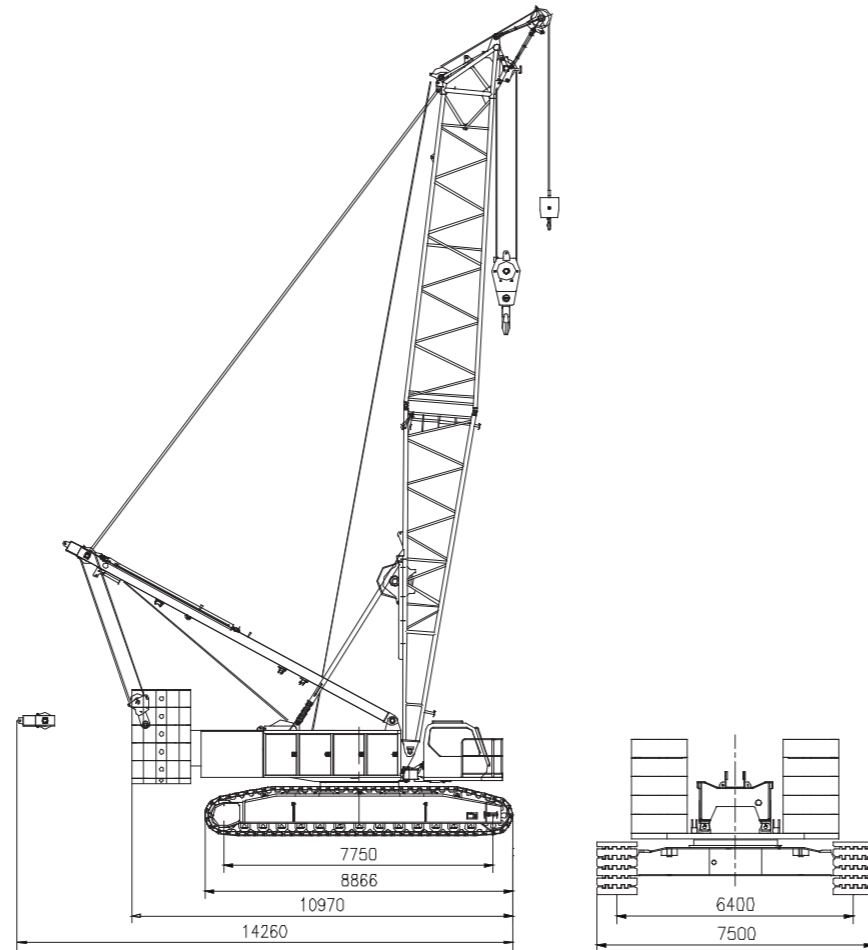
- The wide control room provides wider visual field; the color LCD screen makes wraparound experience available;
- Real-time monitoring of all parameters of the electromechanical fluid with operating buttons within reach;
- Double or triple protection for key safety points such as the anti-tilting system of the boom and anti-misoperation of the handle;
- The secondary hoisting winch is arranged on the boom butt of the main boom to increase maintenance space for disassembly and assembly;

More reliable control over the entire machine

- Mature components of well-known domestic brands whose reliability has been verified in batches and spare parts are easy to obtain;
- Overall monitoring by mobile APP based on Internet of Things, intelligent reminder for maintenance, and online diagnosis of fault alarm;
- Construction data, engine parameters and other host parameter information can be queried by APP in real time and saved in cloud;



Item	Unit	Value	
Max. lifting capacity	t	200	
Max. lifting torque	t · m	1225	
Main boom working condition	Boom length	m	20-86
	Length of tower jib	m	21-66
	Maximum lifting capacity under tower jib working condition	t	70
Hoisting winch	Working angle of main boom under tower working condition	°	85- 75- 65
	Connection length of main boom under tower working condition	m	23-59
	Maximum length of main boom + tower jib	m	59+ 42/53+66
	Fixed jib length	m	12-30
Tower jib working condition	Maximum lifting capacity under fixed jib working condition	t	33.3
	Working angle of main boom under fixed jib working condition	°	40-83
	Angle between fixed jib and main boom	°	10- 30
	Connection length of main boom under fixed jib working condition	m	29-71
	Maximum length of main boom + fixed jib	m	71+18/68+30
Fixed jib working condition	Maximum single rope speed	m/min	143 (no load, 6th floor)
	Rated tension of single rope	t	13.3
Luffing winch	Maximum single rope speed	m/min	65 x 2 (5th floor)
	Rated tension of single rope	t	10.4
Maximum rotation speed	rpm	1.0	
Maximum walking speed	km/h	1.1	
Grade ability	%	30	
Ground pressure	MPa	0.103 (average value under basic boom working condition)	
Turntable counterweight	t	77.5	
Body weight	t	20	
Engine	Rated power/speed	kW/rpm	227/2000
	Maximum output torque/speed	Nm/rpm	1505/1400
	Type	—	CUMMINS QSL9-C305
Track gauge x grounding length x track shoe width	Mm	6400x7750x1100	
Maximum single piece transportation weight	t	36.3 (detachable to less than 30t)	



Main boom

The main boom is a space truss structure with equal sections at the middle and variable sections at both ends, and is welded by high strength steel pipes.
 The length of the main boom is 20m - 86m, which consists of 10m boom butt, 10m boom top, 3m boom middle section, 6m boom middle section and 9m boom middle section, as well as the level luffing hoist.
 Detailed boom combination is shown in the following table:

Main boom length (m)	Boom butt	3m section	6m section	9m section	Boom top
20	1	0	0	0	1
23	1	1	0	0	1
26	1	0	1	0	1
29	1	1	1	0	1
32	1	1	0	1	1
35	1	0	1	1	1
38	1	1	1	1	1
41	1	1	0	2	1
44	1	0	1	2	1
47	1	1	1	2	1
50	1	2	1	2	1
53	1	1	2	2	1
56	1	1	1	3	1
59	1	2	1	3	1
62	1	1	2	3	1
65	1	1	1	4	1
68	1	2	1	4	1
71	1	1	2	4	1
74	1	1	1	5	1
77	1	2	1	5	1
80	1	1	2	5	1
83	1	1	1	6	1
86	1	2	1	6	1

Tower jib

The tower jib is a space truss structure with equal sections at the middle and variable sections at both ends, and is welded by high strength steel pipes.
 Maximum length of main boom + tower jib: 59 m + 42 m / 53 m + 66 m.
 Under the tower jib working condition, the length of main boom is 23m-59m; refer to the Table for Combination of Main Boom Section for its composition.
 The length of the tower jib is 21m - 66m, which consists of 9m boom butt, 9m boom top, 3m boom middle section, 6m boom middle section and 9m boom middle section. Detailed boom combination is shown in the following table:

Length of tower jib (m)	Boom butt	3m section	6m section	9m section	Boom top
21	1	1	0	0	1
24	1	0	1	0	1
27	1	1	1	0	1
30	1	1	0	1	1
33	1	0	1	1	1
36	1	1	1	1	1
39	1	2	1	1	1
42	1	1	2	1	1
45	1	1	1	2	1
48	1	2	1	2	1
51	1	1	2	2	1
54	1	1	1	3	1
57	1	2	1	3	1
60	1	1	2	3	1
63	1	1	1	4	1
66	1	2	1	4	1

Fixed jib

Length of main boom under fixed jib working condition: 29m-71m;
 Length of the fixed jib is 12m - 30m, which consists of 6m boom butt, 6m boom top, and 6m boom middle section;
 Maximum length of main boom + fixed jib: 71m + 18m/68m + 30m.
 Detailed boom combination is shown in the following table:

Fixed jib length (m)	Middle section of fixed jib (pcs.)
12	0
18	1
24	2
30	3

Hoisting mechanism

Composed of an axial variable plunger hydraulic motor, a built-in planetary reducer, a balance valve, a normally closed brake and a steel wire rope. The operating handle allows stepless speed change and combination of multiple selected actions. The high-speed gear can realize fast lifting and the inching gear can achieve precise positioning.
 The steel wire rope is a high-quality anti-rotating steel wire rope. The double-fold reel ensures that multi-layer winding will not mess up the rope and oil change of the winch reducer is convenient.

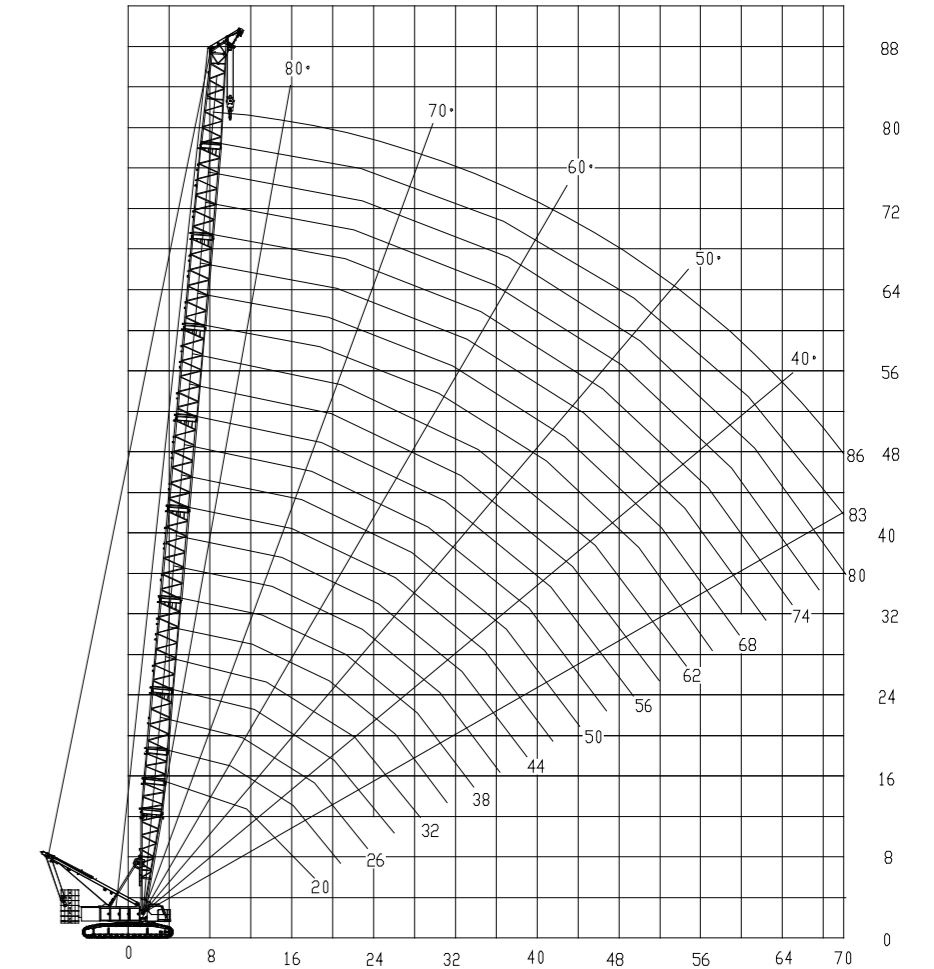
Hoisting mechanism	Steel wire rope diameter (mm)	Φ26
	Maximum single rope speed (m/min)	143 (no load, 6th floor)
	Rated single-rope tension (t)	13.3

Luffing mechanism

The planetary gear reducer is driven by a quantitative hydraulic motor, achieving a variety of compound actions and multiple optional speeds. Spring locking disc brake is adopted. The double-fold duplex reel ensures that multi-layer winding will not mess up the rope.

Main luffing	Steel wire rope diameter (mm)	Φ24
	Maximum single rope speed (m/min)	65x2 (5th floor)
	Rated single-rope tension (t)	10.4

Main boom lifting characteristics



Note: the height curve does not include the influence of boom deflection.

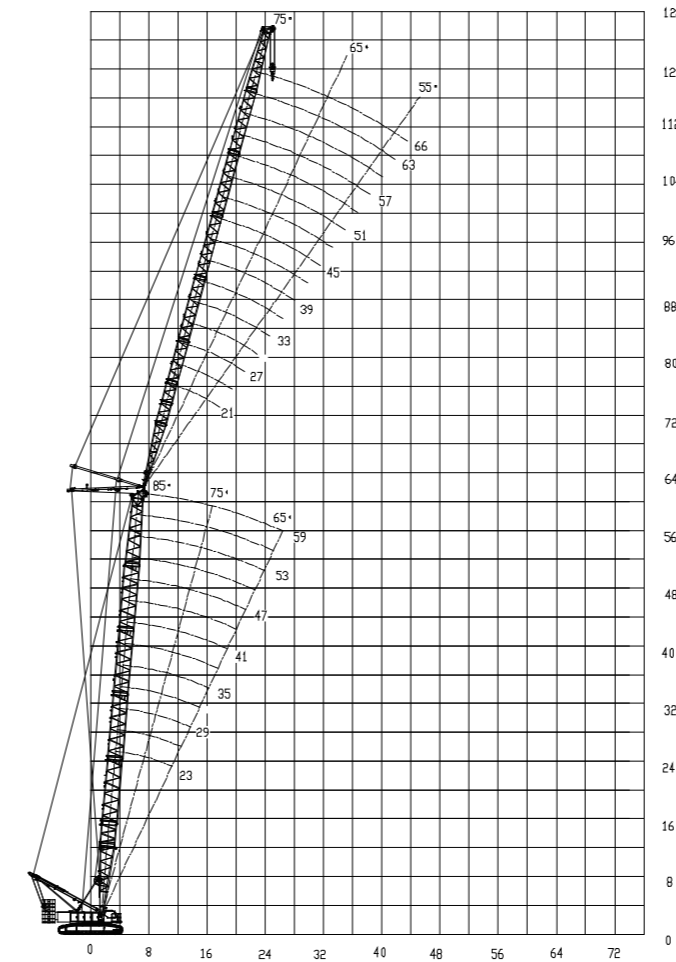
3.2 Table of Lifting Performance under Main Boom Working Condition

Range (m)	Boom length (m)													
	20	23	26	29	32	35	38	41	44	47	50			
5	200													
6	194	183	174											
7	175	170	165	154	144									
8	153	152	145	140	136	131	121							
9	128	129	125	122	118	115	112	110	110	98.7				
10	109	109	109	108	105	102	99.9	106	103	98.7	98.7			
11	93.5	93.5	93.5	93.1	91.9	90.7	89.0	95.7	93.5	91.4	89.4			
12	83.2	83.2	83.2	83.2	83.2	83.1	81.7	87.1	85.2	83.4	81.7			
13	73.4	73.5	73.4	73.4	73.4	73.3	72.7	78.3	77.4	75.8	74.3			
14	66.9	67	66.9	66.9	66.8	66.8	66.7	72.5	72.2	70.8	69.4			
15	60.2	60.3	60.2	60.2	60.1	60.1	60.0	65.2	65	64.4	63.8			
16	55.7	55.8	55.7	55.7	55.6	55.6	55.5	60.4	60.2	60.1	60			
17	50.8	50.9	50.8	50.8	50.7	50.7	50.6	55.1	54.9	54.8	54.7			
18	47.5	47.6	47.6	47.6	47.5	47.4	47.3	51.5	51.4	51.2	51.1			
19	43.8	43.8	43.8	43.8	43.7	43.6	43.6	47.4	47.3	47.2	47			
20		41.3	41.3	41.3	41.2	41.1	41.1	44.7	44.6	44.5	44.3			
22			36.4	36.4	36.3	36.2	36.1	39.4	39.3	39.1	38.9			
24				32.4	32.4	32.3	32.3	32.2	35.1	35	34.8	34.6		
26					29.1	29	29	28.9	31.5	31.4	31.3	31.1		
28						26.3	26.2	26.1	28.5	28.4	28.3	28.1		
30							23.9	23.8	26	25.9	25.7	25.5		
32								21.8	21.7	23.8	23.7	23.5	23.4	
34									20	21.9	21.8	21.6	21.4	
36										20.2	20.1	20	19.8	
38											18.6	18.5	18.3	
40												17.2	17.1	16.9
42													15.9	15.7
44														14.7
Counter weight	69.5t +20t						77.5t +20t							

Range (m)	Boom length (m)													
	53	56	59	62	65	68	71	74	77	80	83	86		
10	87													
11	87	85.6												
12	79.9	78.2	75.1	75.1	71.3	63.1								
13	72.8	71.4	69.3	68.6	66.3	62.3	58							
14	68	66.8	65.5	64.2	63	61.7	57.2	52.6	47.3					
15	62.6	61.5	60.3	59.2	58.1	56.9	54.6	51.5	46.3	42.7				
16	59	57.9	56.8	55.8	54.8	53.7	52.8	50.8	45.7	42.1	38.8			
17	54.1	53.6	52.7	51.8	50.9	49.9	49	47.7	44.7	41.2	38	33.8		
18	50.9	50.8	50	49.1	48.3	47.3	46.5	45.7	44.1	40.6	37.5	33.3		
19	46.8	46.7	46.3	45.9	45.1	44.2	43.4	42.7	41.6	39.7	36.7	32.6		
20	44.1	44	43.8	43.7	43	42.2	41.4	40.7	39.9	39.1	36.1	32.1		
22	38.8	38.6	38.5	38.3	38.1	37.9	37.2	36.5	35.8	35.1	34.5	30.9		
24	34.5	34.3	34.1	34	33.8	33.6	33.4	33	32.4	31.7	31.1	29.8		
26	30.9	30.8	30.6	30.4	30.2	30	29.8	29.7	29.4	28.8	28.2	27.6		
28	27.9	27.8	27.6	27.4	27.2	27	26.8	26.7	26.4	26.2	25.7	25.1		
30	25.4	25.2	25	24.8	24.7	24.5	24.3	24.1	23.9	23.7	23.5	22.9		
32	23.2	23	22.8	22.6	22.5	22.3	22.1	21.9	21.7	21.5	21.3	21		
34	21.3	21.1	20.9	20.7	20.6	20.3	20.2	20	19.8	19.6	19.4	19.1		
36	19.6	19.4	19.2	19.1	18.9	18.7	18.5	18.3	18.1	17.9	17.7	17.5		
38	18.1	18	17.7	17.6	17.4	17.2	17	16.8	16.6	16.4	16.2	16		
40	16.8	16.6	16.4	16.2	16.1	15.8	15.7	15.5	15.2	15	14.8	14.6		
42	15.6	15.4	15.2	15	14.9	14.7	14.5	14.3	14	13.9	13.6	13.4		
44	14.5	14.4	14.1	14	13.8	13.6	13.4	13.2	13	12.8	12.6	12.3		
46	13.5	13.4	13.2	13	12.8	12.6	12.4	12.2	12	11.8	11.5	11.3		
48		12.5	12.3	12.1	11.9	11.7	11.5	11.3	11.1	10.8	10.6	10.3		
50			11.7	11.5	11.3	11.1	10.9	10.7	10.5	10.2	9.9	9.7	9.4	
52				10.7	10.5	10.3	10.1	9.9	9.6	9.4	9.1	8.9	8.6	
54					9.8	9.6	9.4	9.1	8.9	8.6	8.4	8.2	7.9	
56						8.9	8.7	8.4	8.2	7.9	7.7	7.5	7.2	
58							8.3	8	7.8	7.6	7.3	7.1	6.8	6.6
60								7.4	7.2	7	6.7	6.5	6.2	6
62									6.6	6.4	6.2	5.9	5.7	5.4
64										5.9	5.6	5.4	5.2	4.9
66											5.4	5.2	4.9	4.4
68												4.7	4.5	4
70													4	3.5
Counter weight	77.5t+20t													

Under the level luffing hoist working condition: its lifting capacity is the same as that of the main boom with the same range, and is no more than 25t.

3.3 Tower jib lifting characteristics



Description:

- Under the tower jib working condition, the working length of the main boom is 23m-59m and the working length of the tower jib is 21m-66m.
- Under the tower jib working condition, the longest boom combination is 59m + 42m/53m + 66m.
- The height curve does not include the influence of boom deflection.

3.4 Table of Partial Lifting Performance under Tower Jib Working Condition

Main boom length m	23																		
	21				27				33				39				45		
Range m	Working angle of main boom (°)																		
	85	75	65	85	75	65	85	75	65	85	75	65	85	75	65	85			
12	70			59															
14	62.3			58.2			46.4												
16	54.1			52.8			46.4			33.8									
18	46.6	44.7		46.4			45.1			33.6			25.2						
20	40.8	39.2		40.7			40.5			33.4			24.9						
22	36.3	34.9		36.2	34.7		36.1			32.7			24.3						
24		31.3		32.6	31.2		32.4	31		31.7			23.4						
26		28.5	27.3	29.6	28.4		29.4	28.1		29.3	27.9		22.7						
28			25	27	25.9		26.9	25.7		26.8	25.6		21.9	21.2					
30			23		23.8	22.8	24.7	23.6		23.5			21.3	21.2					
32					22	21.1	22.9	21.9	20.9	22.8	21.8		20.7	21.2					
34						19.6	21.2	20.4	19.4	21.2	20.2		20.3	20					
36						18.3		19	18.1	19.7	18.8	17.9	19.5	18.6					
38								17.8	16.9	18.5	17.7	16.8	18.3	17.4					
40									15.9	17.4	16.6	15.8	17.2	16.4	15.5				
44										14.7	14	15.3	14.5	13.8					
48											12.6		13	12.4					
52															11.2				

3.4 Table of Partial Lifting Performance under Tower Jib Working Condition

Main boom length m	23											
	51			57			63			66		
Jib length m	Working angle of main boom (°)											
	85	75	65	85	75	65	85	75	65	85	75	65
20	20.4			15.9								
22	20.1			15.3			11.6			10.5		
24	19.4			14.6			11.1			10		
26	18.8			14			10.6			9.6		
28	18.1			13.5			10.1			9.1		
30	17.5			13			9.8			8.7		
32	16.9	16.9		12.6			9.3			8.4		
34	16.5	16.8		12.1	13		8.9			8		
36	16	16.7		11.7	12.6		8.6	9.4		7.7		
38	15.6	16.5		11.3	12.2		8.3	9		7.4	8.1	
40	15.3	16		11.1	11.7		8	8.6		7.2	7.7	
44	14.7	14.3	13.6	10.4	11.1		7.5	8		6.6	7.2	
48	13.5	12.8	12.1	10	10.5	11.1	7.1	7.5		6.2	6.6	
52	12.2	11.5	10.9	9.1	10	10.4	6.5	7.1	7.5	5.8	6.2	6.6
56		10.5	10	8.5	9.1	9.8	6	6.6	7.1	5.4	5.9	6.2
60			9	8.5	8.9	8.5	6	6.5	4.9	5.4	5.8	
64				8.2	5.2	5.6	6	4.7	4.9	5.3		
68					5.2	5.5		4.5	4.9			
72								5.2				4.6

Main boom length m	38														
	21			27			33			39			45		
Jib length m	Working angle of main boom (°)														
	85	75	65	85	75	65	85	75	65	85	75	65	85	75	65
12	69.7														
14	61.2			50.9											
16	53.8			51.3			39.5								
18	46.3			46.1			39.7			29.8			22.8		
20	40.5			40.5			39.7			29.7			22.6		
22	36.1	33.4		36			35.8			29.6			22.5		
24	32.5	30		32.4			32.2			29.5			22.4		
26		27.2		29.4	27.1		29.2			29			22.2		
28		24.9		26.9	24.7		26.7	24.5		26.5			22		
30		23		24.6	22.8		24.6	22.5		24.5	22.3		21.8		
32			19.5		21.1		22.7	20.8		22.6	20.6		21.1	18.6	
34			18.2		19.6		21.1	19.3		21	19.2		20.6	18.9	
36			17		18.3	16.7	19.7	18		19.6	17.9		19.4	17.6	
38					15.7		16.9	15.4	18.3	16.7			18.1	16.5	
40					14.8		15.9	14.5	17.2	15.7			17	15.4	
44								12.8		14	12.6	15.2	13.8		
48								11.5		12.6	11.3	13.6	12.4	11.1	
52											10.2		11.2	10	
56														9	
60															8.3

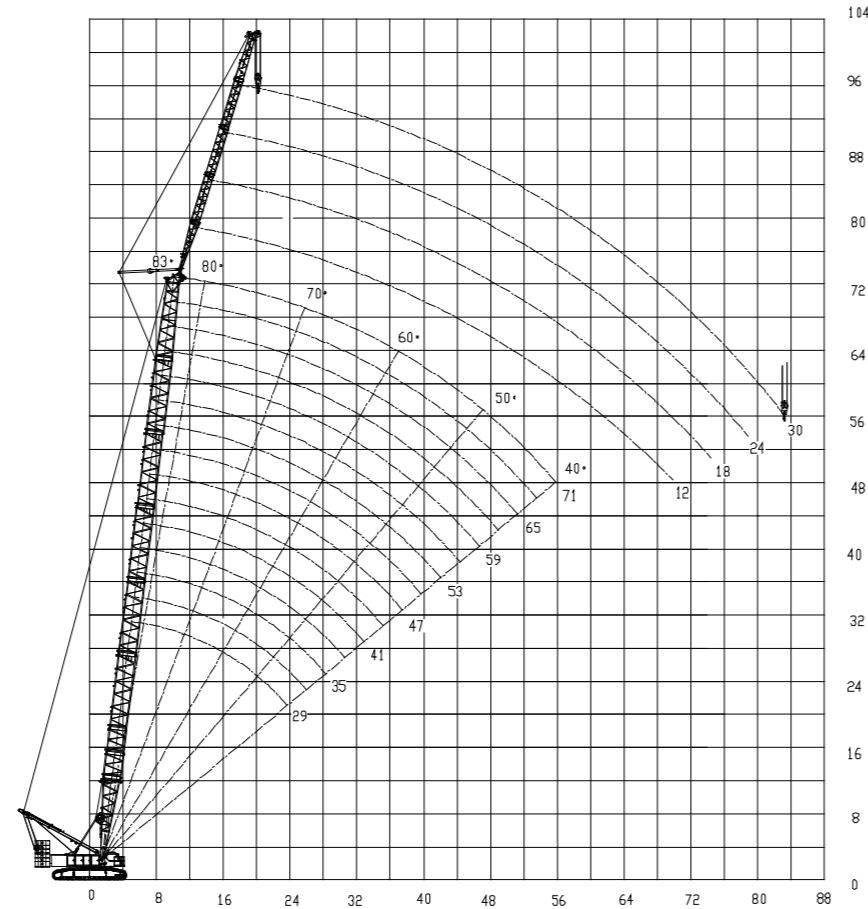
Table of Partial Lifting Performance under Tower Jib Working Condition

Main boom length m	38												
	51			57			63			66			
Jib length m	Working angle of main boom (°)												
	85	75	65	85	75	65	85	75	65	85	75	65	
20	18.7												
22	18.5			14.6									
24	18.3			14.4			11.4			10.3			
26	18.2			14.2			10.9			9.9			
28	18			13.9			10.4			9.4			
30	17.8			13.3			10			9			
32	17.3			12.8			9.6			8.6			
34	16.7			12.4			9.2			8.3			
36	16.3	15.4		12			8.8			7.9			
38	15.9	15.5		11.6	11.8		8.6			7.6			
40	15.4	15.3		11.3	11.8		8.2	9.1		7.3			
44	14.8	13.5		10.6	11.7		7.6	8.6		6.8	7.7		
48	13.4	12.1		10.1	11.1		7.2	8		6.3	7.2		
52	12.1	10.9	9.7	9.4	10.4	9.6	6.8	7.5		6	6.6		
56		9.9	8.8	8.6	9.8	8.6	6.1	7.1	7.4	5.5	6.2		
60		9	8		8.9	7.9	5.7	6.5	7.3	5.1	5.8	6.4	
64			7.3		8.1	7.1	5.3	6	6.9	4.7	5.3	6	
68						6.6		5.5	6.2	4.5	4.9	5.6	
72							6		5.2	5.8		4.7	5.2
76										5.3			4.8
80													4.6

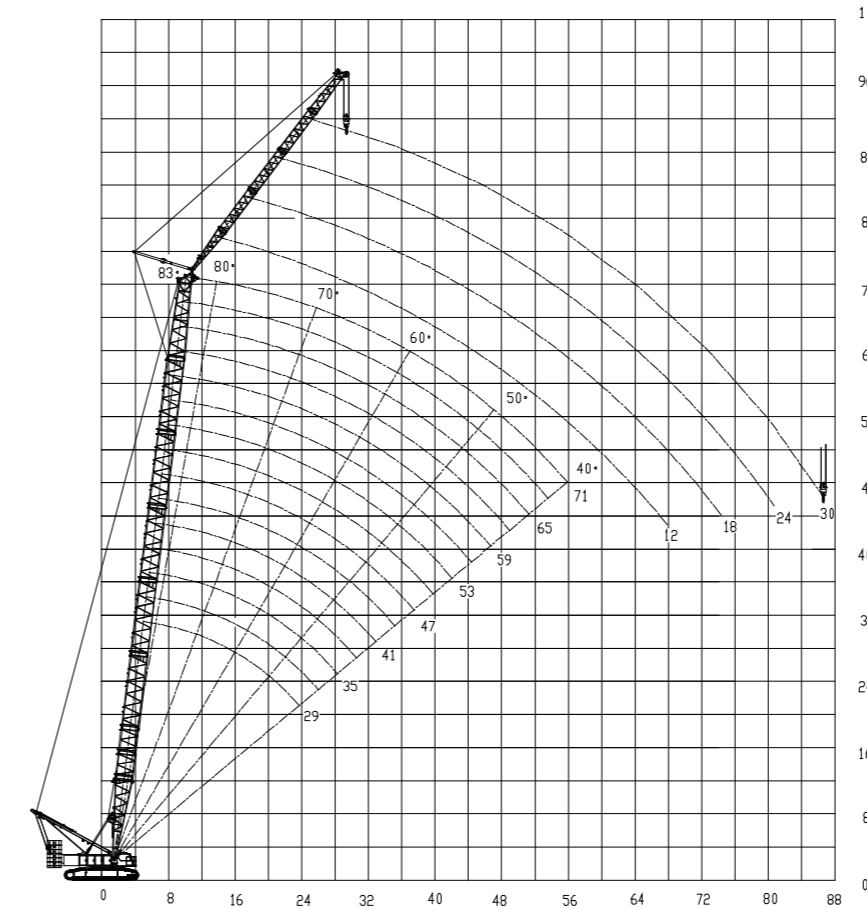
Main boom length m	56											
	21			27			33			39		
Jib length m	Working angle of main boom (°)											
	85	75	65	85	75	65	85	75	65	85	75	65
14	47.2											
16	46.2			37.5								
18	43.9			37.1			30.6			24.4		
20	39.9			36.4			30.4			24.3		
22	35.6			35.4			30.1			24.2		
24	32			31.8			29.6			24.1		
26	29			28.9			28.7			23.9		
28		23.1		26.4			26.2			23.6		
30		21.2		24.4	20.9		24.2			23.3		
32		19.6		22.5	19.4		22.3	19.1		22.2		
34		18.2			18		20.7	17.8		20.6	17.5	
36		17			16.8		19.3	16.6		19.3	16.4	
38			13		15.7		18.1	15.5		18	15.3	
40			12.7		14.8		14.6			16.9	14.3	
44			11.3			11.1	12.9				12.7	
48						9.9				9.6	11.4	
52										8.6	10.3	8.3
56										7.7		7.5
60												6.9

3.5 Fixed jib lifting characteristics - when the angle between the fixed jib and the main boom is 10°

Main boom length m	56					
Jib length m	45			51		
Range m	Working angle of main boom (°)					
	85	75	65	85	75	65
20	19.3					
22	19.3			15.9		
24	19.2			15.8		
26	19.1			15.7		
28	18.9			15.6		
30	18.8			15.5		
32	18.6			15.3		
34	18.4			15.2		
36	18.2			15		
38	17.9	15		14.9		
40	16.7	14		14.7	13.2	
44	14.9	12.5		14.4	12.2	
48	13.3	11.2		13.1	10.9	
52		10		11.8	9.8	
56		9.1	7.3	8.9	6.7	
60			6.5	8.1	6.1	
64			6	7.3	5.5	
68			5.4		5	
72					4.6	



When the angle between the fixed jib and the main boom is 30°



Description:

- Under the fixed jib working condition, the working length of the main boom is 29m-71m, and the working angle of the main boom is 40°-83°.
- The fixed jib has a working length of 12m-30m, and an included angle with the axis of the main boom of 10°/30°.
- Under the fixed jib working condition, the longest boom combination is 71m+18m/68m+30m.
- The height curve does not include the influence of boom deflection.

3.6 Table of Partial Lifting Performance under Fixed Jib Working Condition

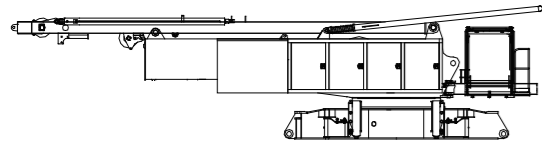
Main boom length m	29							
Jib length m	12		18		24		30	
Range m	Fixed jib angle (°)							
	10	30	10	30	10	30	10	30
10	33.3							
12	33		25.8					
14	32.9		25.8		19.7			
16	32.9	26.8	25.7		18.9		12.4	
18	32.3	26.4	24	18.8	19.5		11.7	
20	31.6	25.4	23.6	18.1	18		11	
22	30.2	24.7	23.2	17.4	17.6	13.6	10.4	
24	29.1	24	22.1	16.8	16.6	13.3	9.8	
26	28.7	23.8	20.8	16.2	16.3	12.9	9.4	6.5
28	26.4	23.1	20.1	15.8	15.6	12.6	8.9	6.3
30	24.1	22.7	19.1	15.2	14.3	12.3	8.5	6.1
32	22	22.3	18.5	15	13.3	11.9	8.2	5.9
34	20.3	20.5	17.7	14.5	12.7	11.5	7.8	5.8
36			16.9	14.2	12.2	11.2	7.5	5.7
38			16.3	14	11.6	10.8	7.2	5.6
40				13.7	11.2	10.6	7	5.4
42					10.6	10.3	6.8	5.3
44					10.1	10.1	6.5	5.2
46						9.9	6.4	5.1
48							6.2	5.1
50							6	5
52								5

Main boom length m	41							
	12		18		24		30	
Jib length m	Fixed jib angle (°)							
	10	30	10	30	10	30	10	30
12	33							
14	32.8		25.8					
16	32.5	26.5	25.8		19.4			
18	32.1	26.2	25.8		18.9		10.8	
20	31.3	25.2	25.5	17.4	17.9		10.2	
22	30	24.5	24	16.2	16.8		9.7	
24	29	24	24.2	16	16	10.1	9.3	
26	28.2	23.5	23.3	15.8	15.3	9.8	8.8	5
28	25.7	23	22.2	14.8	14.7	9.6	8.4	5
30	23.4	22.6	21.6	14.2	14.1	9.4	8.1	4.8
32	21.4	22	20.7	14	12.7	9.2	7.7	4.7
34	19.6	20.2	19.7	13.5	12.1	9	7.4	4.6
36	18.1	18.6	18.5	13.2	11.6	8.9	7.1	4.5
38	16.7	17	17.1	13	11	8.7	6.9	4.4
40	15.4	15.7	15.9	12.5	10.7	8.6	6.7	4.4
42	14.3	14.5	14.8	12.3	10.2	8.5	6.4	4.3
44		13.5	13.7	12.2	9.9	8.4	6.2	4.1
46			12.8	11.4	9.6	8.3	6	4.1
48			12	10.6	9.3	8.2	5.8	4
50				9.9	10.5	8.1	5.7	3.9
52					10	8.1	5.5	3.9
54					9.7	8.1	5.4	3.8
56						8	5.3	3.8
58							5.2	3.8
60								3.7

Main boom length m	53							
	12		18		24		30	
Jib length m	Fixed jib angle (°)							
	10	30	10	30	10	30	10	30
12								
14	32.7							
16	32.5		25.8					
18	32	26	24.7		16.2		9.6	
20	31	24.9	22.5	15.4	15.2		9.1	
22	29.3	24.2	24.2	15.1	14.5		8.7	
24	28.7	24	21.2	14.8	13.9	7.5	8.3	
26	27.6	23	21	14.4	13.2	7.4	7.9	
28	25.1	22.7	21	14.2	12.7	7.2	7.5	3.8
30	22.7	22.2	20.7	13.9	12.2	7	7.2	3.7
32	20.7	21.2	20.6	13.7	11.7	6.9	6.9	3.6
34	18.9	19.4	19.3	13.4	11.4	6.8	6.6	3.5
36	17.3	17.8	17.8	13.2	10.9	6.6	6.4	3.5
38	16	16.4	16.4	13	10.6	6.5	6.1	3.4
40	14.7	15.1	15.1	12.2	10.2	6.4	5.8	3.3
42	13.6	13.9	14	12	9.9	6.3	5.7	3.3
44	12.6	12.9	13	11.4	9.6	6.2	5.5	3.2
46	11.7	11.9	12.1	11.2	9.2	6	5.3	3.1
48	10.9	11.1	11.3	10.4	9	5.9	5.2	3.1
50	10.1	10.2	10.5	9.5	8.7	5.9	5	3
52	9.4	9.5	9.8	9.2	8.4	5.8	5	3
54		8.7	9.2	8.5	8.2	5.8	4.8	2.9
56			8.5	8.3	7.9	5.7	4.7	2.9
58			7.8	8.2	7.7	5.7	4.6	2.9
60				7.5	7.5	5.6	4.5	2.8
62					7.2	5.5	4.4	2.8
64						5.5	4.2	2.8
66							4.1	2.7
68							4	2.7
70								2.7

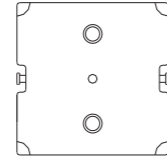
Main boom length m	62							
	12		18		24		30	
Jib length m	Fixed jib angle (°)							
	10	30	10	30	10	30	10	30
12								
14	32.5							
16	32		21.4					
18	31.5	25.1	20.1		13.9			
20	30.8	24.5	18.4		13.1		8.1	
22	29.1	23.9	17.5	11.8	12.6		7.7	
24	28.4	23.3	17.1	11.6	12		7.3	
26	27	22.9	16.9	11.3	11.4	5.8	7	
28	24.5	22.4	17	11.1	11	5.7	6.6	
30	22.2	21.8	17	10.9	10.5	5.6	6.4	3.1
32	20.1	20.8	16.9	10.7	10.1	5.5	6.1	3
34	18.3	18.9	16.3	10.5	9.7	5.4	5.8	2.9
36	16.8	17.3	15.6	10.3	9.4	5.3	5.6	2.8
38	15.4	15.9	15	10.1	9.1	5.2	5.4	2.8
40	14.1	14.6	14.5	9.9	8.8	5	5.2	2.7
42	13	13.4	13.5	9.7	8.5	5	5	2.7
44	12	12.4	12.4	9.5	8.2	5	4.9	2.6
46	11.1	11.4	11.5	9.3	7.9	4.9	4.9	2.6
48	10.2	10.6	10.7	9.1	7.6	4.8	4.7	2.5
50	9.5	9.8	9.9	8.9	7.4	4.7	4.6	2.5
52	8.7	9	9.2	8.8	7.1	4.7	4.5	2.4
54	8	8.3	8.5	8.6	6.9	4.6	4.4	2.4
56	7.4	7.5	7.8	8.2	6.7	4.6	4.2	2.3
58	6.8	6.9	7.2	7.5	6.4	4.5	4.1	2.3
60		6.3	6.7	7	6.3	4.4	4	2.2
62			6.1	6.3	6.1	4.3	3.8	2.2
64			5.6	5.9	5.9	4.3	3.7	2.2
66				5.4	5.5	4.2	3.6	2.2
68					5.1	4.1	3.5	2.1
70					4.7	4	3.4	2.1
72						3.9	3.2	2.1
74							3.1	2

Main engine A 1 pcs.*



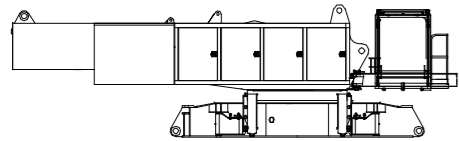
Length mm	13580
Width mm	3000
Height mm	3400
Weight kg	36360

Clump weight 1 pcs.*



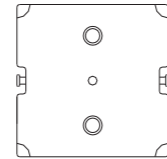
Length mm	1700
Width mm	1700
Height mm	510
Weight kg	7100

Main engine B (without mast, sway bar, winch and steel wire rope) 1 pcs.*



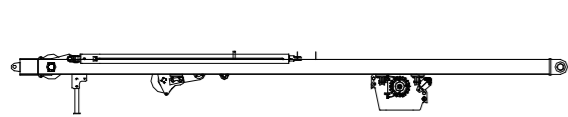
Length mm	10050
Width mm	3000
Height mm	2975
Weight kg	29570

Clump weight 2 pcs.*



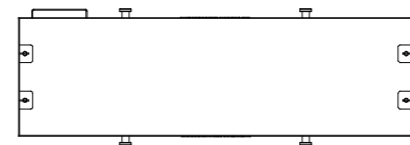
Length mm	1700
Width mm	1700
Height mm	310
Weight kg	4000

Integrated transportation of mast 1 pcs.*



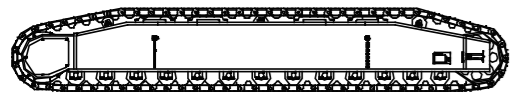
Length mm	10940
Width mm	2060
Height mm	1155
Weight kg	7090

Body weight 2 pcs.*



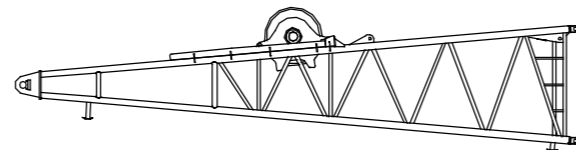
Length mm	4480
Width mm	1550
Height mm	630
Weight kg	10000

Crawler frame assembly 2 pcs.*



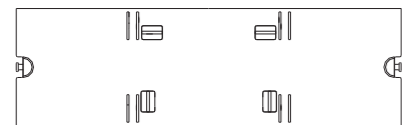
Length mm	8866
Width mm	1645
Height mm	1420
Weight kg	20510

Boom butt of main boom 1 pcs.*



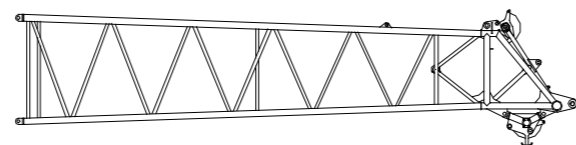
Length mm	10255
Width mm	2365
Height mm	2255
Weight kg	6046

Counterweight base 1 pcs.*



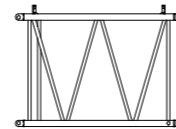
Length mm	6000
Width mm	1700
Height mm	520
Weight kg	12700

Boom top of main boom 1 pcs.*



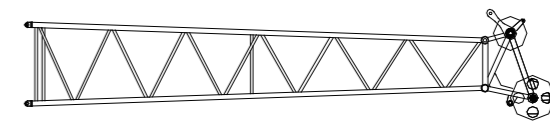
Length mm	11055
Width mm	2320
Height mm	2620
Weight kg	3570

3m section of main boom 1 pcs.*



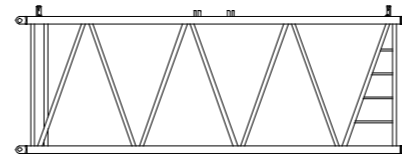
Length mm	3120
Width mm	2320
Height mm	2285
Weight kg	780

Luffing jib top 1 pcs.*



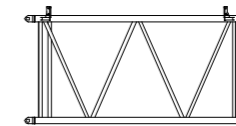
Length mm	9445
Width mm	1690
Height mm	1850
Weight kg	1220

6m section of main boom 1 pcs.*



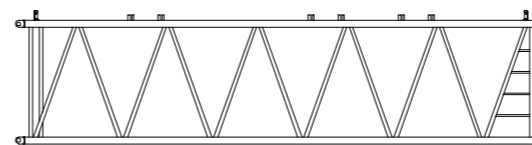
Length mm	6120
Width mm	2320
Height mm	2285
Weight kg	1220

3m section of luffing jib 2 pcs.*



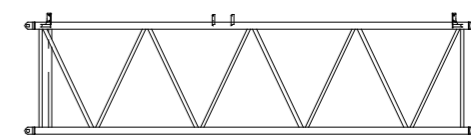
Length mm	3090
Width mm	1700
Height mm	1615
Weight kg	370

9m section of main boom 6 pcs.*



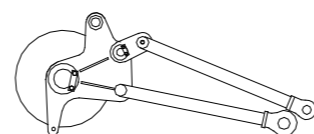
Length mm	9120
Width mm	2320
Height mm	2285
Weight kg	1730

6m section of luffing jib 1 pcs.*



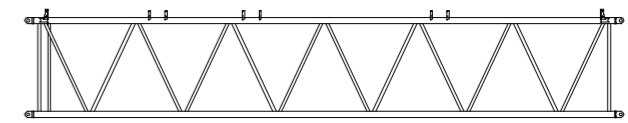
Length mm	6090
Width mm	1700
Height mm	1615
Weight kg	650

Level luffing frame 1 pcs.*



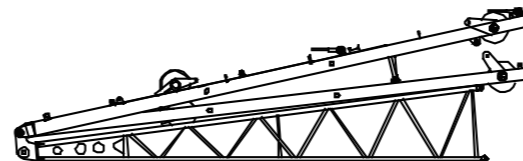
Length mm	1860
Width mm	1514
Height mm	760
Weight kg	206

9m section of luffing jib 4 pcs.*



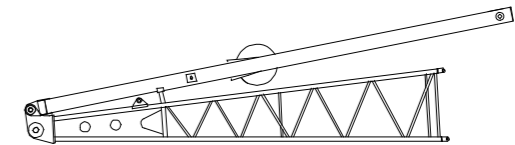
Length mm	9090
Width mm	1700
Height mm	1615
Weight kg	880

Luffing jib butt (including front/rear strut of luffing jib) 1 pcs.*



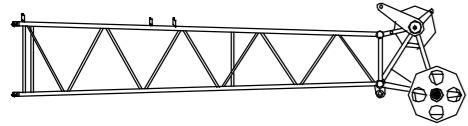
Length mm	10156
Width mm	1750
Height mm	3005
Weight kg	4890

Fixed jib butt 1 pcs.*



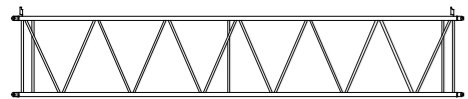
Length mm	7150
Width mm	1505
Height mm	1955
Weight kg	1265

Fixed jib top 1 pcs.*



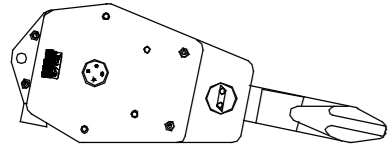
Length mm	6430
Width mm	1260
Height mm	1650
Weight kg	650

6m section of fixed jib 3 pcs.*



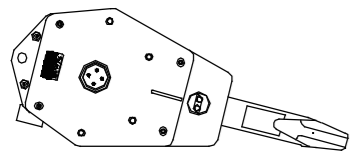
Length mm	6060
Width mm	1260
Height mm	1175
Weight kg	260

260 t hook 1 pcs.*



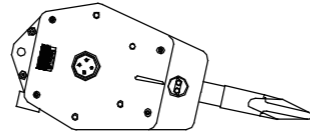
Length mm	2480
Width mm	1400
Height mm	810
Weight kg	4235

160 t hook 1 pcs.*



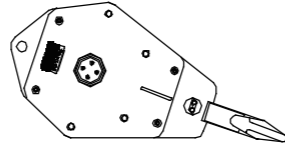
Length mm	2180
Width mm	900
Height mm	810
Weight kg	2380

100 t hook 1 pcs.*



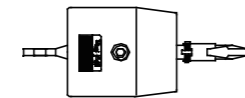
Length mm	1975
Width mm	920
Height mm	810
Weight kg	1935

50 t hook 1 pcs.*



Length mm	1965
Width mm	675
Height mm	810
Weight kg	1355

12 t hook 1 pcs.*



Length mm	965
Width mm	430
Height mm	430
Weight kg	460

Note:

1. The parts and components are schematic only and are not drawn to a fixed scale. The length dimension is overall dimension;
2. The weight does not take the packaging into account and may be slightly different from the marking due to manufacturing errors;
3. Should there be any variation in the size and weight of the above parts and components due to improvement of them, the size and weight of the ex-factory products shall prevail;
4. The number of parts will be decided according to actual needs.